



Weekly Construction Progress Report

Morningside Elementary School

Week Ending: 09/17/2021

THIS WEEK

- Sitework continues
 - Storm drainage piping installation
 - Building pad grading complete
 - Site demolition finishes at cafeteria addition
- Mechanical equipment relocation continues
- Electrical rough-in continues throughout building
- Plumbing rough-in continues throughout building
- Ductwork installation continues at cafeteria, media center, and art/STEM Rooms.
- Sheetrock continues throughout building
- Sheetrock finishing continues throughout building
- Interior framing continues throughout building
- Selective demolition for cafeteria addition begins
- CMU and drywall infill
- Plaster repair begins at Area A and B
- Fire sprinkler installation begins at Area A
- Door frame installation continues

NEXT WEEK: 09.20.21 – 09.24.21

- Sitework continues
 - Storm drainage piping installation
- Mechanical equipment relocation continues
- Electrical rough-in continues throughout building
- Plumbing rough-in continues throughout building
- Ductwork installation continues at cafeteria, media center, and art/STEM Rooms.
- Sheetrock continues throughout building
- Sheetrock finishing continues throughout building
- Interior framing continues throughout building
- Selective demolition for cafeteria addition continues
- Footers for cafeteria addition
- Fire sprinkler installation continues
- Door frame installation continues
- Plaster repair continues at Area A and B
- Drinking fountain installation at Area B
- CMU and drywall infill

BUDGET

Construction Budget

\$17,600,000.00

Budget Status

\$2,395,124.47

Completed By:
Ben Fairchild

PARRISH
CONSTRUCTION GROUP

Photo/Activity Updates

Building pad grading

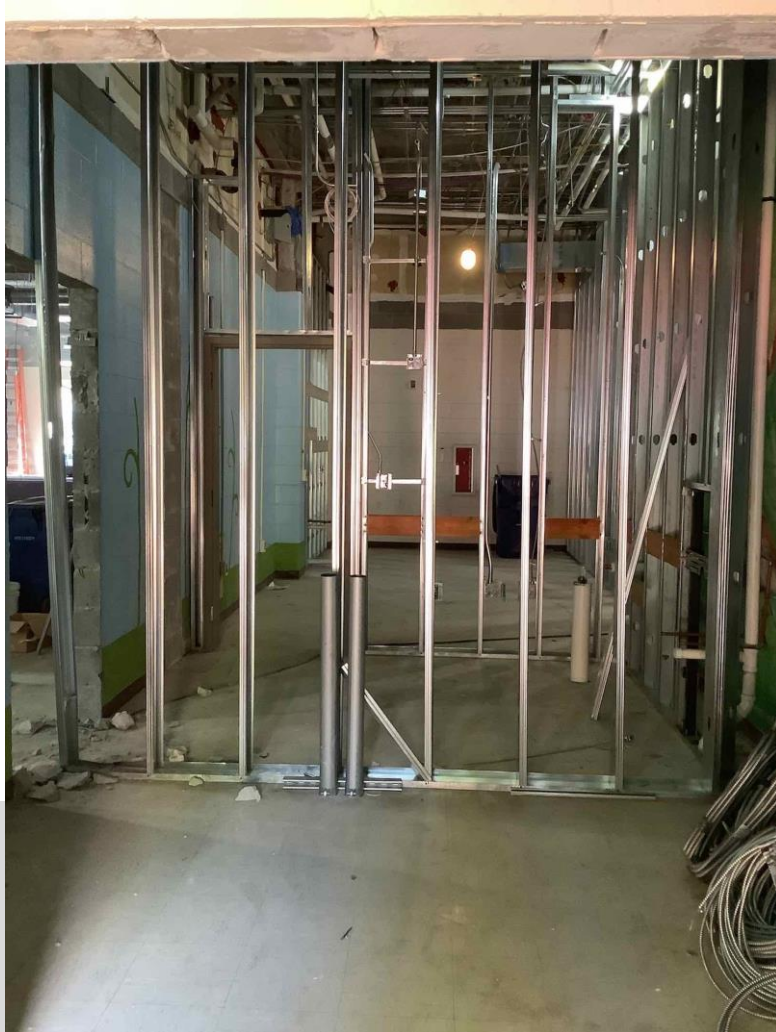


Building pad grading complete



Photo/Activity Updates

Interior framing at Area D

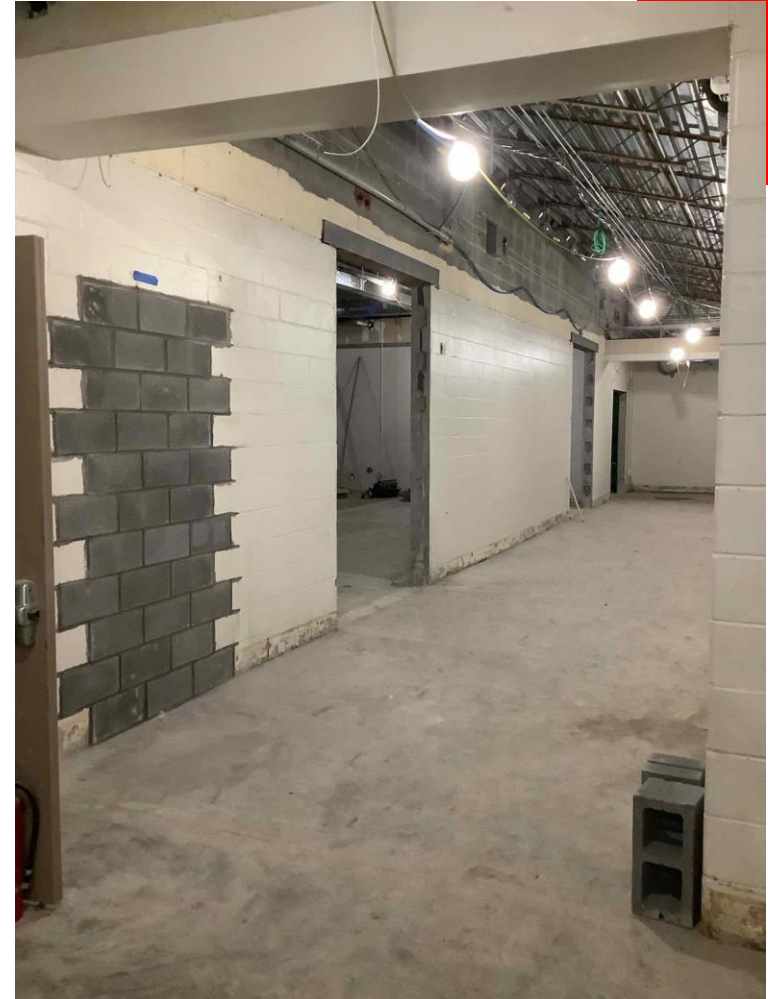


Interior framing at media center



Photo/Activity Updates

Selective demolition at cafeteria addition



CMU infill

